

# EVO SAFETY

## User Manual

# EVO SAFETY

## Horizontal rope securing system

Subject to technical changes

---

### BRIEF DESCRIPTION

---

#### INTENDED USE

In connection with a full body harness according to EN 361 and a retractable type fall arrester according to EN 360 or a guided type fall arrester on a flexible anchor line according to EN 353-2 or a lanyard according to EN 354 with a fall arrester according to 355, the horizontal rope securing system EVO SAFETY only serves to secure one person on a flat roof, platform etc. It is only possible to use a lanyard that complies with EN 354 in combination with a fall arrester that complies with EN 355.

This equipment may only be used by persons familiar with personal fall prevention equipment and the risks associated with working in areas where there is a risk of falling.

The horizontal rope securing system EVO SAFETY may only be used to secure persons and may not be used to transport loads.

#### **A retractable type fall arrester:**

##### **Company BORNACK:**

HSG BS lite 3.0; HSG lite 6.0; HSG BS mini;  
HSG Rebel 3m; HSG Rebel 6m; HSG Rebel 10m

#### **Company Ikar:**

41- HWPS 6; 41- HWB 2; 41-HWPS9;  
41-HWB 3,5; 41-HWPB 3,5; 41-HWB 2,8;  
41-HWS 4,5; 41-HWPB 5,5; 41-HWPS 3;  
41-HWS 6; 41-HWPB 7; 41-HWPS 4,5;  
41-HWS 9; 41-ACB 4.8; 41-HWPB 9;  
41-HPB 7; 41-HPS 6

As the systems need to be planned individually and installed for various uses, the number of users is stated on the type plate on the system, and must be observed accordingly.

The user can only use the overall system from start to finish without releasing the safety by means of the EVO SHUTTLE.

The system may only be used in conjunction with EVO SHUTTLE.

The system may not be used for rope-supported work.

The anchor equipment must be planned and calculated by a competent office (e.g. BORNACK); the parameters defined here for every system (length of lanyards, number of users etc.) must be recorded in writing and observed.

**All other uses are deemed improper. The company BORNACK will not be liable for any ensuing damages. The user bears the sole risk.**

---

## BRIEF DESCRIPTION

---

### EQUIPMENT

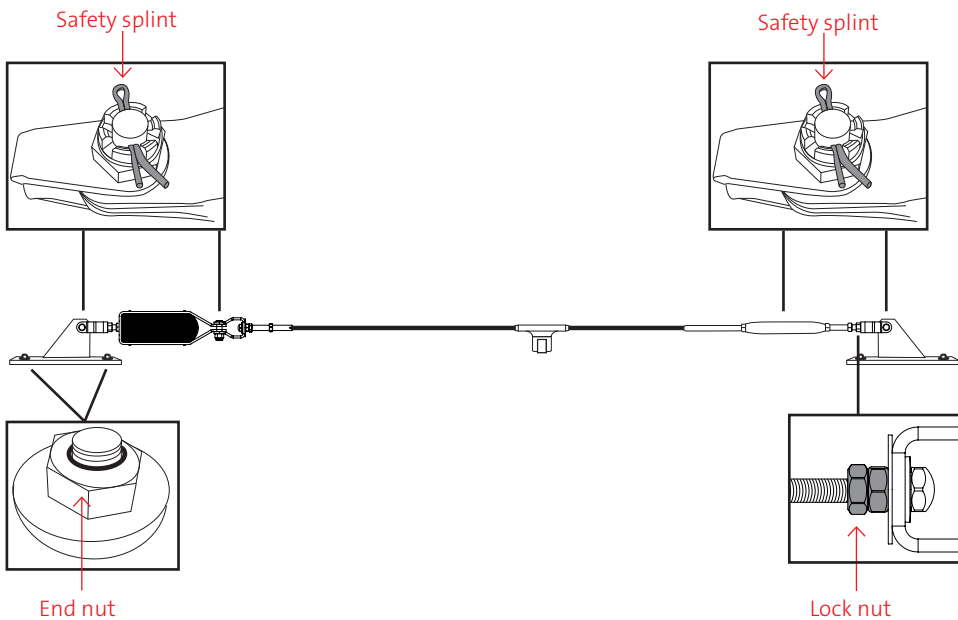
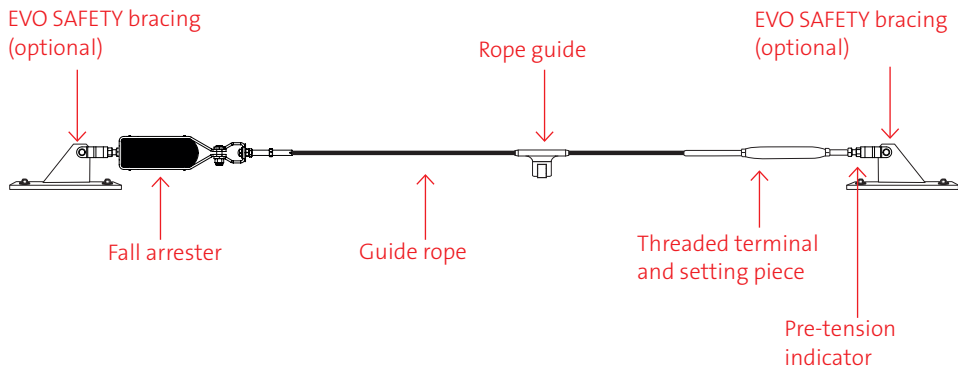
- Stainless steel guide rope 6x7 (8 mm) or 1x19 (8 mm) with rope end connection
- End attachment
- Stainless steel fall arrester
- Pre-tension indicator
- Straight rope guides in stainless steel
- Curved rope guides in stainless steel

### ACCESSORIES

- End anchor EVO SAFETY bracing in stainless steel
- End anchor D-ring RÖ 01 in stainless steel
- Roof anchor in stainless steel/hot dipped

### USE

- Fall protection for persons on façades, roofs, large machines, platforms etc.



---

## INFORMATION BEFORE USE

---



**Always check every time  
before use!**

- The system may no longer be used if even very minor faults are detected during the check before the system is used.
- Faulty system components may only be tested or repaired in a workshop authorised by BORNACK.
- Regular inspections are essential because the safety of the user depends on the efficiency and durability of the system.
- The user must have completely read and understood the User Manual before use.

### **VISUAL INSPECTION**

- No deformation.
- No obvious damage.
- No corrosion.
- System is not blocked.
- All components are in place.
- Guide rope is undamaged.
- Identification is legible.
- Safety splints are all in place.
- Lock nuts are on the setting pieces.

### **FUNCTION TEST**

- EVO SHUTTLE slides smoothly on the guide rope.
- The control disc of the pre-tension indicator can be turned.

---

## EVO SAFETY IN USE

---

### PREPARATION

Observe the User Manual.



Observe the User Manual of the retractable type fall arrester/ guided type fall arrester on a flexible anchor line/lanyard.



Observe the User Manual of the runner element EVO SHUTTLE.

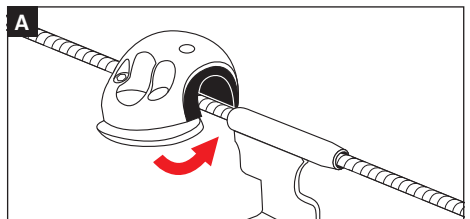


### USE

Hook the lanyard into the connecting element of the EVO SHUTTLE.

**A** Place the EVO SHUTTLE onto the guide rope of the EVO SAFETY system.

**B** Pull the EVO SHUTTLE quickly and loosely behind you. The EVO SHUTTLE aligns to the rope guide when passing rope guides.



#### ATTENTION:



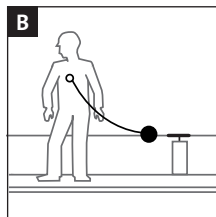
In case of a fall in the system, please note that swinging after the fall is possible. Minimise the fall height and/or the free fall. It is prohibited to climb over the system

#### CAUTION: RISK OF

LIFE-THREATENING INJURIES!:



It is prohibited to stand under suspended loads!  
Wear a safety helmet!



---

## EVO SAFETY IN USE

---

### **COMBINATION**

When combining this product with other parts, there is a risk of mutual impairment with respect to the function and safety. Compatibility must be assessed during the risk analysis. If you have any questions about compatibility or you require help with the risk analyses, feel free to contact BORNACK.

---

## SAFETY REGULATIONS

---

### **There is a risk to life if these safety instructions are not observed!**

- The system may no longer be used even in the case of very minor faults.
- Damaged, fall-stressed or dubious equipment must be immediately withdrawn and not used. The equipment may only be inspected by an expert in compliance with DGUV principle 312-906, BORNACK and/or a workshop authorised in writing by BORNACK. This must be documented in the test card.
- Independent modifications or repairs are not allowed.
- Rope protection is part of the personal fall prevention equipment and should be assigned to a specific person.
- The system may only be used by qualified staff that are familiar with the material and who are proficient in handling the equipment and have been briefed about the possible risks associated with its use.
- In accordance with the accident prevention guidelines (UVV), the users of fall protective equipment (Category III) must attend a theoretical training course and a practical training course. Make use of the training competence of the BORNACK training centres: [info@bornack.de](mailto:info@bornack.de)
- Clothing and shoes must be suitable for the task at hand and the weather conditions.
- Only use if you are fully fit and healthy.
- Health impairments can jeopardise the safety of the user when working at heights or depths.
- Calculation of the possible fall path if all necessary PPE components are used correctly: (if necessary braking path HSG) + surplus lanyard (situation-dependent) + braking path energy absorber (max. 1.75 m) + height of D-ring (1.5 m) + safety reserve 1.0 m.
- Before using, ensure adequate clearance below the user to prevent impact on a protruding object or the ground.
- Protect personal protective equipment during storing, use and transportation against the effects of heat (e.g. welding flames or sparks, burning cigarettes) and chemicals (e.g. acids, alkalis, oils) and mechanical impact (e.g. sharp edges).
- The combinability and protective effect of the system must be checked for each hazard situation (risk assessment).
- If a casualty hangs motionless in a full body harness for a longer time, blood cannot flow back from the legs and/or the flow may be interrupted. This can lead to a suspension trauma, a circulatory shock with serious to fatal consequences.
- The responsible person must draft an emergency plan for the evacuation of the system in case of unforeseeable events (poor weather, thunderstorms, fire etc.). The system must be cleared within a reasonable time. BORNACK can help you draw up tailor-made rescue plans and includes these in the necessary training courses:
- Before starting work, the responsible person must draw up a plan of rescue measures that defines how to rescue casualties quickly and safely and ensures first aid measures. Casualties must be rescued within 20 minutes. BORNACK can help you draw up tailor-made rescue plans and includes these in the necessary training courses.  
E-mail hotline: [info@bornack.de](mailto:info@bornack.de)
- The local safety guidelines (e.g. in Germany, the DGUV Regulations 112-198 and 112-199 issued by the professional associations) and the accident prevention guidelines for the specific industry (UVV) must be observed.



---

## OTHER

---

### **REGULAR INSPECTIONS**

This system must be inspected by the manufacturer or by an expert at least once a year. The result must be documented in the test card at the end of this User Manual.

### **SALES**

The dealer must ensure that the User Manual is supplied in the language of the designated country. The respective translation must be authorised by BORNACK.

### **SERVICE**

If you have any further questions about safe use of this system or other BORNACK services, such as:

- Risk analyses
- Rescue plans
- Training courses
- Expert inspections
- Technical inspections
- Maintenance + inspections

If you have any questions, please contact our e-mail hotline: [info@bornack.de](mailto:info@bornack.de)

We will be happy to help!

### **MAINTENANCE**

- If necessary, apply a small amount of oil on the joints so that the moving parts of the karabiner and other devices run smoothly. If possible, use precision mechanics oil. Ensure that the oil does not come into contact with textile PPE components.

- Maintenance may only be carried out by a qualified expert in compliance with DGUV Principle 312-906. All instructions in this User Manual must be strictly observed.
- Protective equipment that is clean and well looked after will last longer!

### **CLEANING**

- Dry damp personal protective equipment in the air, not on artificial heat sources. Dry metal components with cloths.
- Clean soiled textile components (e.g. full body harnesses and ropes) with lukewarm water and a little detergent for delicates. Then rinse carefully with clean water and allow to dry in the air. Other cleaning agents are not allowed!
- If you have any questions about disinfection, please contact our e-mail hotline: [info@bornack.de](mailto:info@bornack.de)
- If the personal protective equipment comes into contact with salt-water, keep it wet until it can be rinsed with plenty of distilled water.
- If necessary, use compressed air to blow on the unit.

---

## OTHER

---

### **LIFE SPAN**

The expert makes a decision about whether the time has come to withdraw a system or its components based on his technical expertise.

The life span of the system is not defined by years, but by the usage frequency.

For reasons of safety, intensive use and/or extreme application conditions such as sharp edges, chemical influences etc. will reduce the usage period. The company owner needs to ensure this in the workplace risk analysis.

The test card at the end of this User Manual must be presented during the regular expert inspections and be completed by an expert.

### **REPAIRS**

- For reasons of liability, repairs may only be carried out by the manufacturer.
- Only original spare parts from the manufacturer may be used.

---

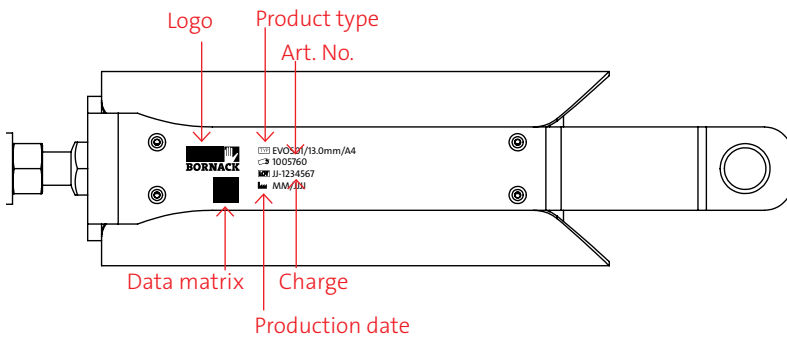
## OTHER

---

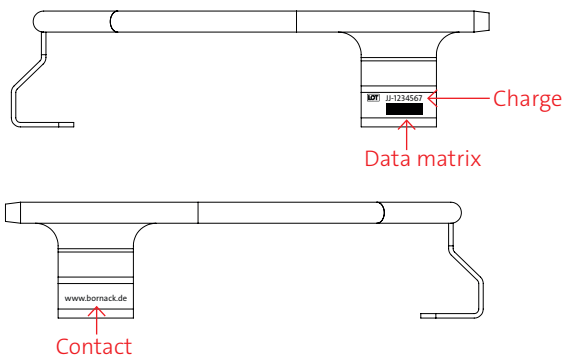
### PRODUCT IDENTIFICATION

The following identification is on the product: also, a system plate needs to be attached to each system.

#### Fall arrester:



#### Rope guide:

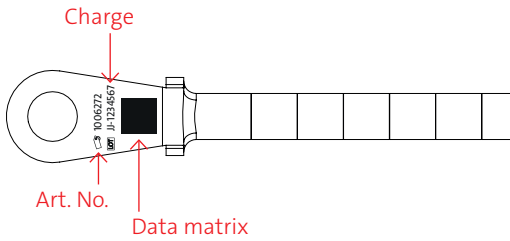
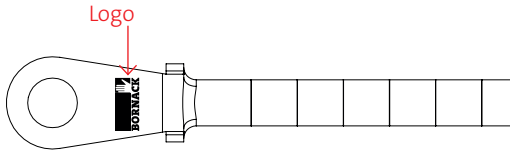


---

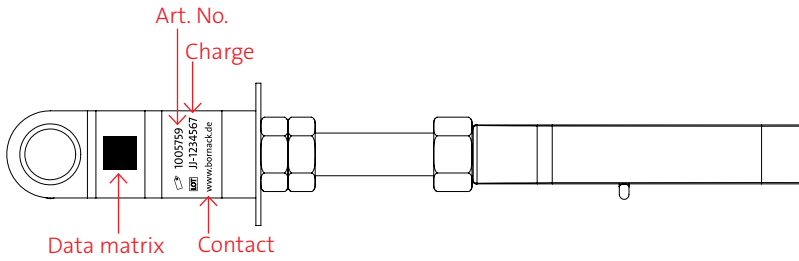
**OTHER**

---

**Threaded terminal:**



**Pre-tension indicator:**



OTHER

System plate:

Logo

Product name → **EVO SAFETY**

Product type → Horizontales Seilsicherungssystem

Product type → **TVP** EVOS01/Anlage

Production date → **MM/JJJJ**

Useful load → **x**

EN norms → EN 795-C:2012 CEN/TS 16415:2013

Observe/read the User Manual →

Warning: Suspended load →

Project no. → **Projekt Nr.**

System no. → **Anlagen Nr.**

SAFEPOINT  
Planung und Montage von ortsfesten Sicherungssystemen

SAFEPOINT Sicherheitstechnik GmbH  
Bustadt 39  
74360 Ilsfeld / Germany

Fon +49 (0)7062 269 070  
Mail info@safepoint.de  
www.safepoint.de

Contact → **BORNACK**  
Bustadt 39  
74360 Ilsfeld / Germany  
www.bornack.de

Contact → **12345.JJ-123**

Production date → **MM/JJJJ**

Contact → **Wear a full body harness**  
**Use a fall arrester**



# TEST CARD

## FOR ANNUAL MONITORING

---

The test list must be completed in full by the expert during the annual inspection.

This test list does not claim to cover all test criteria and does not relieve the expert from his decision about the overall condition.

Type product name: \_\_\_\_\_

Production date: \_\_\_\_\_

Charge: \_\_\_\_\_ Serial no.: \_\_\_\_\_

Purchase date: \_\_\_\_\_

Date of first use: \_\_\_\_\_

Maximum life span until: \_\_\_\_\_

	Date	Signature	Next inspection	Reason for inspection
Year 1				
Year 2				
Year 3				
Year 4				
Year 5				
Year 6				
Year 7				
Year 8				
Year 9				
Year 10				





### **FALLSTOP**

Safety equipment for securing and rescuing at heights and depths

### **SAFEPOINT**

Planning and assembly of stationary securing systems

### **BORNACK GmbH & Co. KG**

Bustadt 39  
74360 Ilsfeld  
Germany

Tel + 49 (0) 70 62 / 26 90 0-0  
Fax + 49 (0) 70 62 / 26 90 0-550  
info@bornack.de  
www.bornack.de

